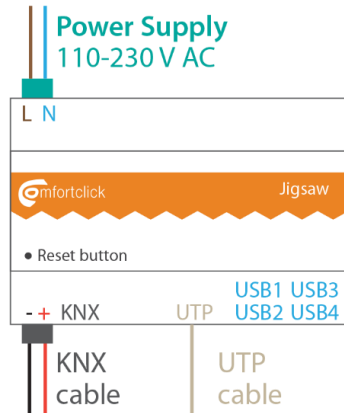


Jigsaw Quick Manual

1. **Installation** - mount your Jigsaw on the DIN rail, connect the power supply, KNX and connect the Jigsaw to the network.



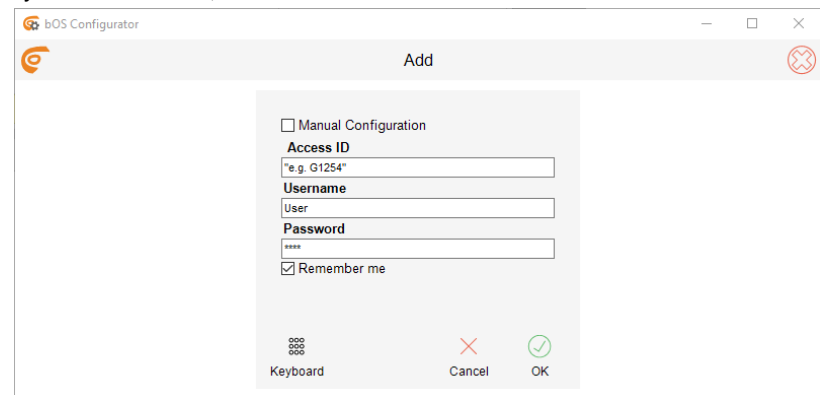
2. **Download and install bOS Configurator** on your PC. You can get bOS Configurator on our web page:
http://www.comfortclick.com/Software/Details/bOS4_Configurator

3. Connect to the Jigsaw

1. **a) Connect locally** - make sure that your PC with bOS Configurator is connected to the same network as your Jigsaw than follow the steps below.
b) Connect remotely – if you are connecting to your Jigsaw remotely via the Internet, port forwarding should be enabled on your router. Port 443 (TCP) should be forwarded to your Jigsaw's local IP. More about port forwarding can be found in [bOS Server manual](#).
2. Open **bOS Configurator**.
3. Click on the menu button on the top right corner and select **Add**.



4. Enter your **Access ID, User name and Password**



By default, Access ID is the **serial number of your Jigsaw**. You can find the serial number on the sticker on the side of your Jigsaw (*Without - ; e.g. J1154*). **Access ID** is a **unique name** for accessing the bOS Server. This name enables adding profile and accessing your bOS Server, without the need of knowing its IP address.

Enter Username: **User** and Password: **Pass** and click OK.

4. **Start creating your bOS configuration or open an existing configuration.**

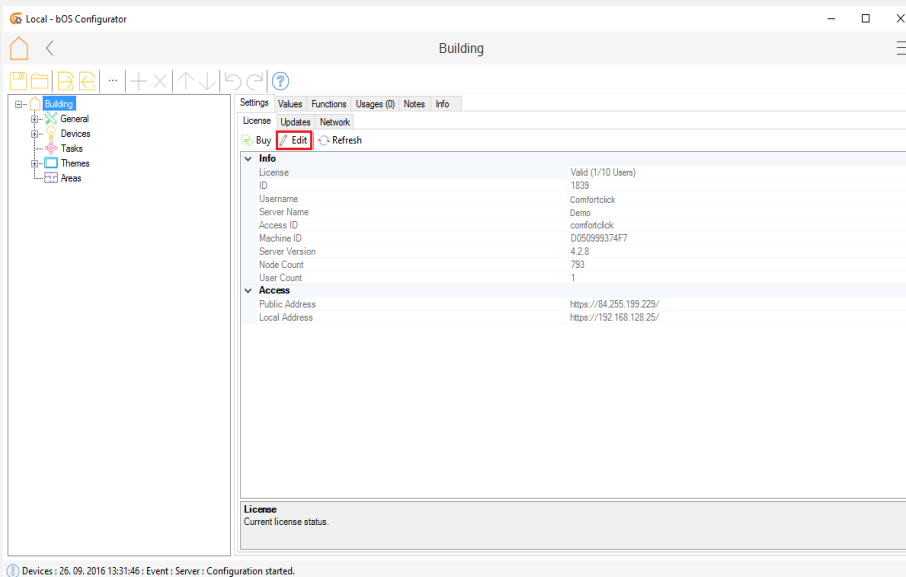
Please check our support tools for more information on how to work with bOS:
www.comfortclick.com/Support



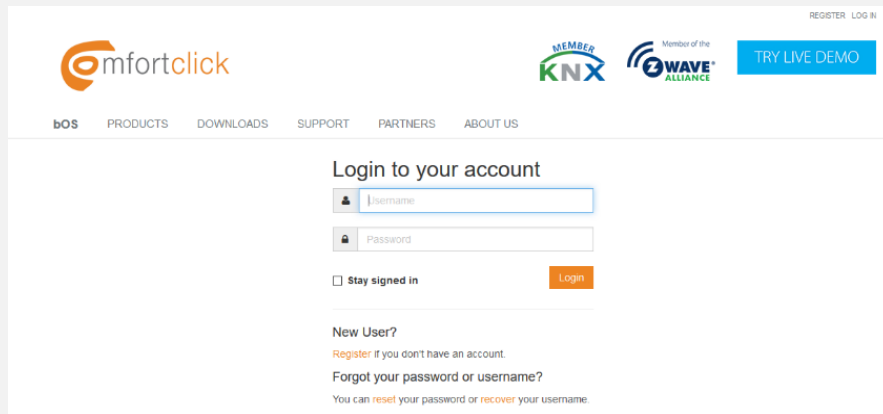
The procedure below is optional; it is required only if you want to change your default Access ID and other access settings.

Edit Jigsaw Access Settings

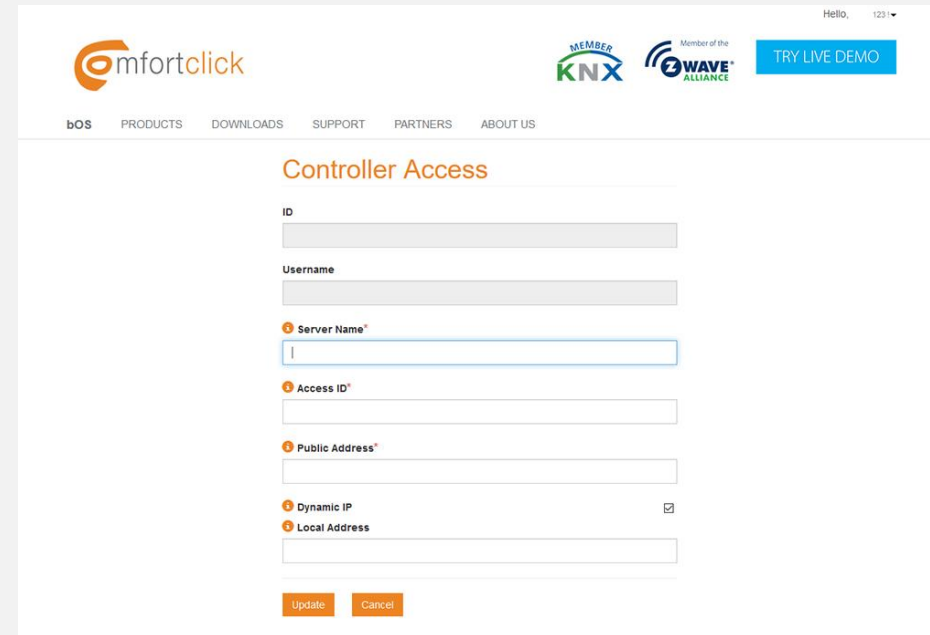
1. Open bOS Configurator.
2. Click **Edit** button.



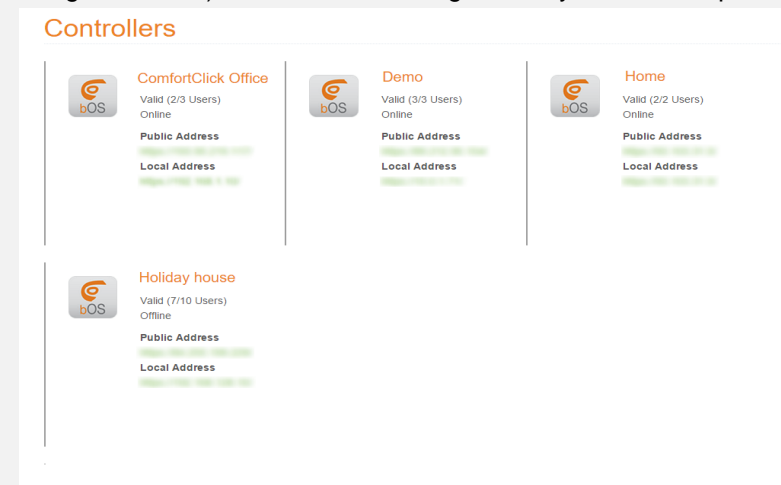
3. Login to your account on ComfortClick web page www.comfortclick.com.



4. You can now change your **Server name, Access ID, Public Address** and **Local Address**.



5. You can also see the list of all your other Controllers (Grinders, Jigsaws and Sledgehammers) and edit their settings under your account profile.



Specifications

Software:	bOS PRO Comfort License, Included: 3 Users
Size:	107 mm x 61 mm x 50 mm (WxHxD)
CPU	1,2 GHz quad-core ARM
RAM	1 GB
Disk:	SD card 32 GB
Connectors:	1 x KNX, 4 x USB, 1 x Ethernet port
Power:	110-240VAC 0.35A 50/60 Hz
OS:	Linux
Power consumption:	approx. 2 W
Product #	CC-J-1

Miscellaneous



- Always shut down Jigsaw properly by shutting it down in bOS Configurator. Don't shut down Jigsaw by unplugging it from the power supply.
- The use of UPS is recommended.
- DHCP server should be running on the network in order to automatically obtain IP address on Jigsaw.
- Make sure that bOS Server and bOS Configurator are both of the same software version.
- Holding the reset button for 2 seconds will restart your Jigsaw.
- Holding the reset button for 10 seconds will reset your configuration.

Thank you for buying ComfortClick products.

For any additional information please visit www.ComfortClick.com.

