

# bOS Configurator

[About](#)

[Connecting to bOS Server](#)

[Adding Profile](#)

[Manual Configuration](#)

[Importing Profiles](#)

[Controller registration](#)

[License](#)

[License Edit and Buy](#)

[Edit](#)

[Buy](#)

[General Overview](#)

[Main toolbar](#)

[Main Menu](#)

[Context Menu](#)

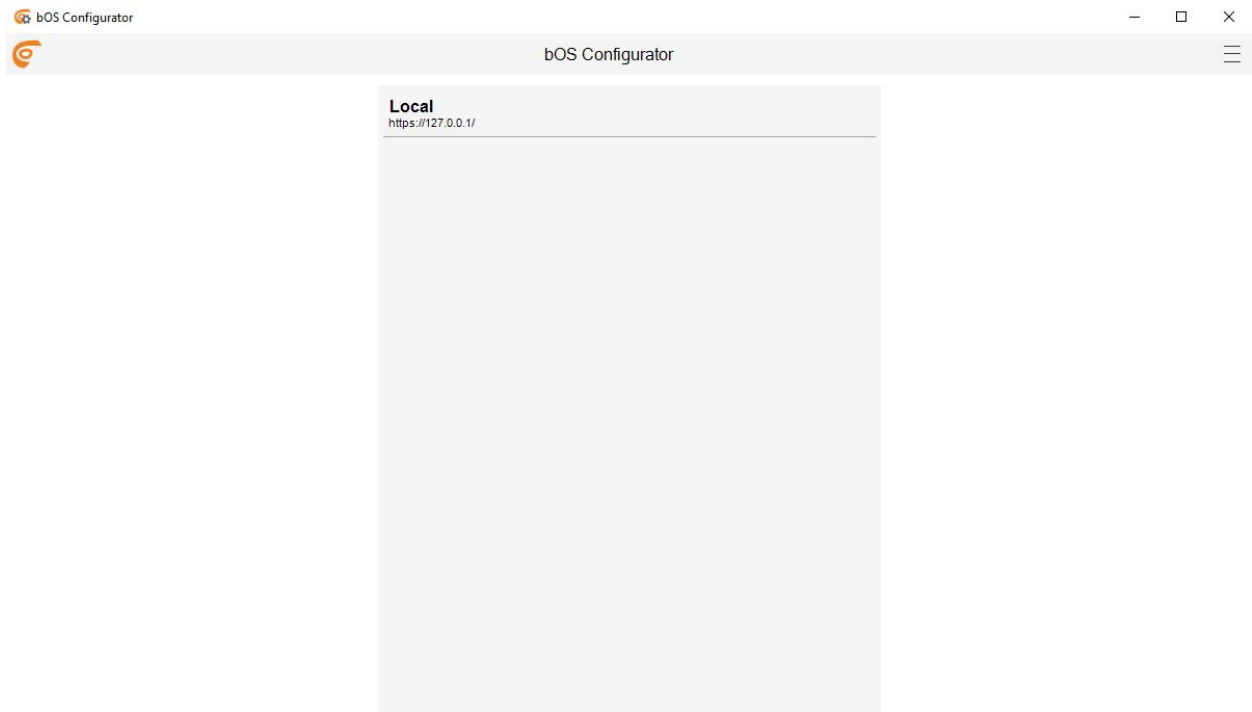
[Node panel](#)

[Log](#)

## About

bOS Configurator is an application for creating, managing and editing bOS configurations. This application connects to bOS server and displays the building configuration and other server settings. With bOS Configurator you can manage building user account, set device settings, create logical function and design your custom graphical user interface.

# Connecting to bOS Server



Picture 1: Connection profiles

If hardware is purchased from ComfortClick, all necessary software is already installed and user connects to server by adding or editing their profile. Users Enter their Access ID. By default, the Access ID is the serial number of the ComfortClick controller (e.g. G1223). Serial number is shown on the sticker of the hardware. If the hardware is not purchased from ComfortClick, connecting to the server is shown in the topic below.

# Adding Profile

The screenshot shows a window titled "Add" from the "bOS Configurator" application. The window contains the following elements:

- Manual Configuration
- Access ID: [Text Input Field]
- Username: [Text Input Field]
- Password: [Text Input Field]
- Remember me
- Keyboard icon (bottom left)
- Cancel button (bottom right)
- OK button (bottom right)

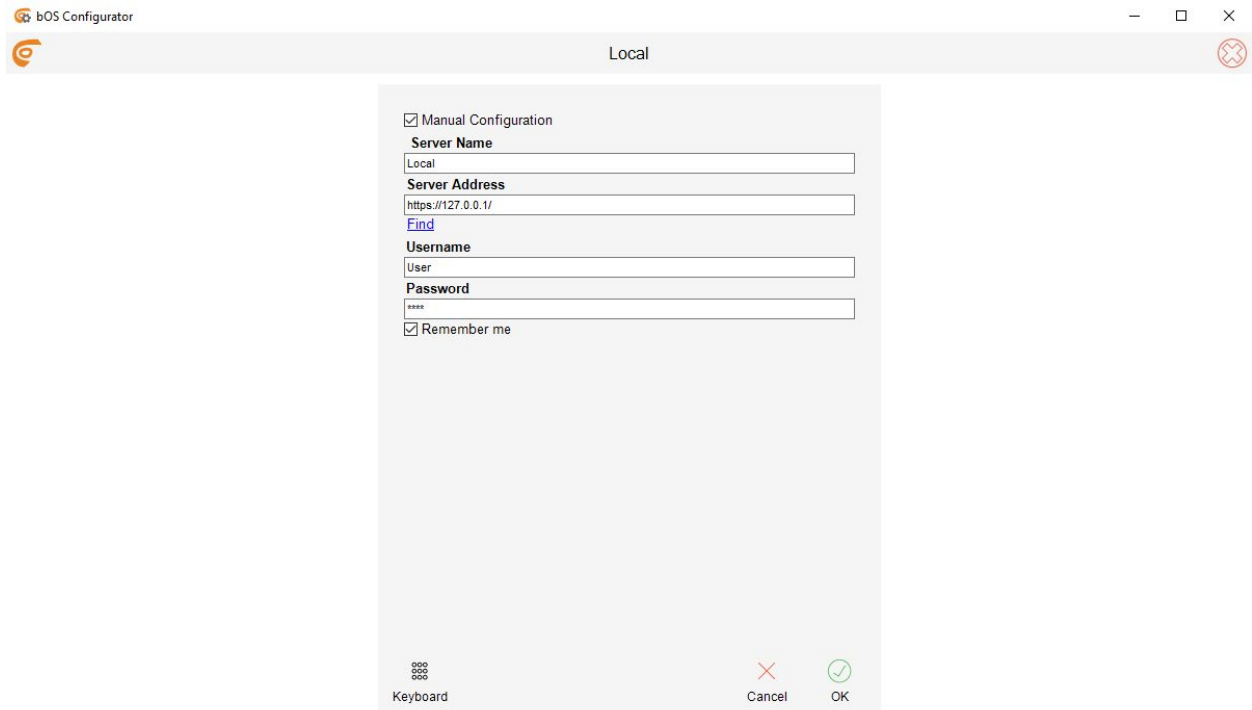
Picture 2: Add profile

To add registered controller, the following settings needs to be entered:

- Access ID: Unique name for accessing the bOS Server. You can change Access ID by clicking the "Edit" button in bOS Configurator or online in your user profile on [www.comfortclick.com](http://www.comfortclick.com).
- Username: Name of the building user (user must have administrator privileges).
- Password: User's password (passwords are case sensitive).

## Manual Configuration

When you don't know Access ID or you are connecting to newly installed bOS server for the first time, you need to add profile manually, because the controller is not registered yet. See the [Controller Registration](#) section to learn how to register a controller.



Picture 3: Add profile manually

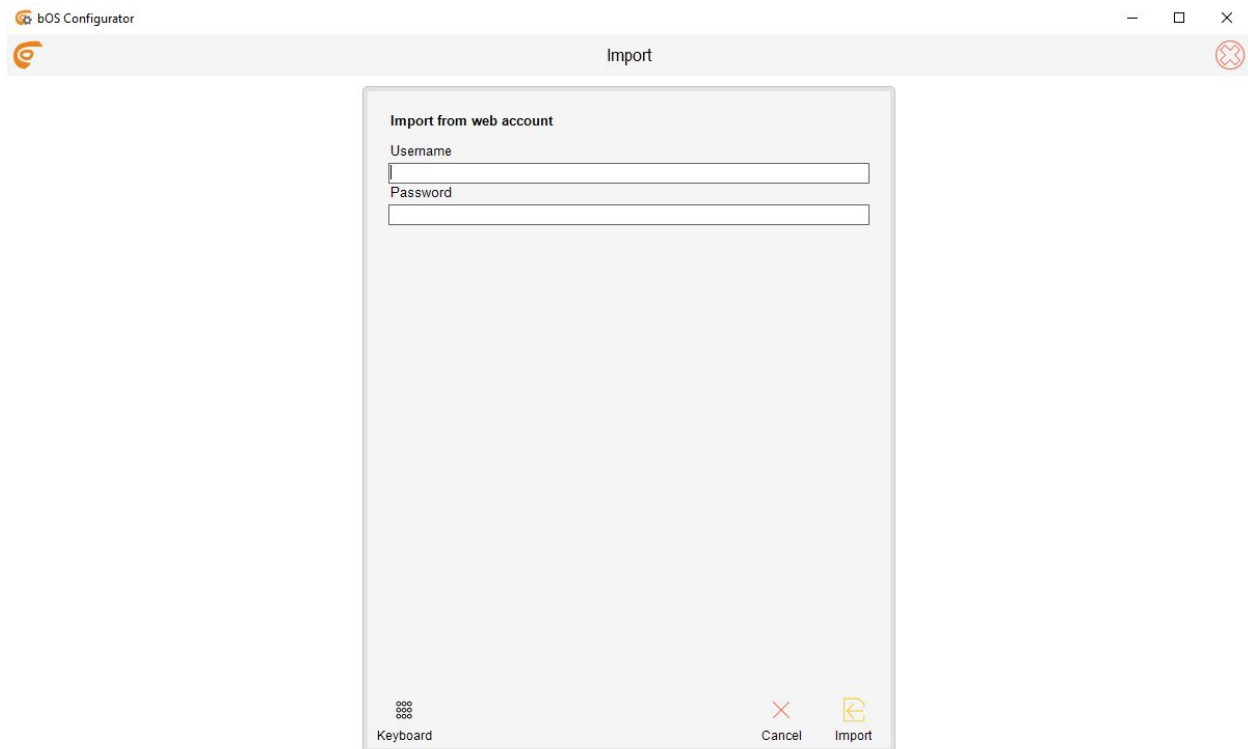
Profile in manual configuration contains the following settings:

- Server Name: Name of the bOS Server (building name e.g. Home, Office, Holiday house...).
- Server Address: The IP address of your bOS server. You can find the servers on the local network by clicking on the Find button. Find button will display a list of bOS servers on your local network. Server address is filled automatically by selecting a server from the list and clicking on the Add button.
- Username: Name of the building user (user must have administrator privileges).
- Password: User's password (passwords are case sensitive).

NOTE: The default Username is "User" and Password is "Pass". It's highly recommended that you change default password after first login!

- Remember me: Checking the Remember me will remember user's password.

# Importing Profiles



Picture 4: Importing profiles

To import profiles from your ComfortClick web account, controllers must be added to your web account. See the [Controller Registration](#) section to learn how to add controllers to your web account.

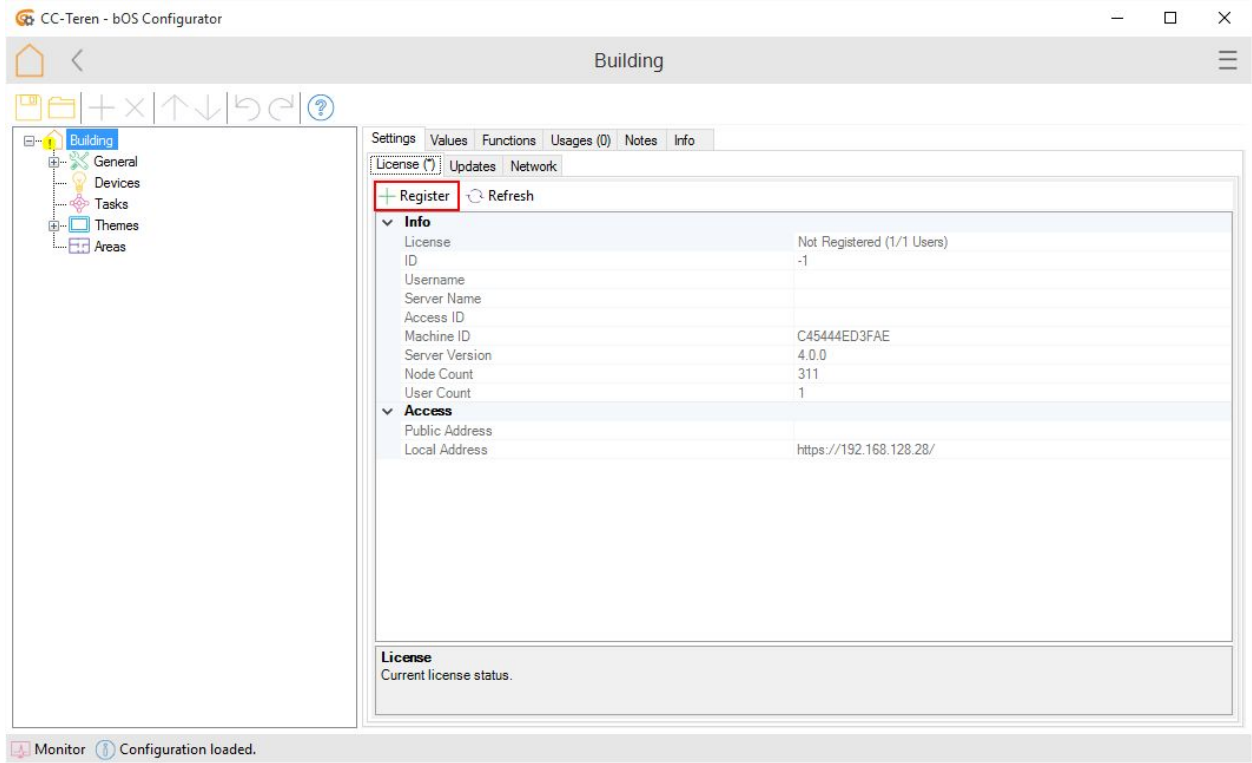
- Username: the username used when registering on ComfortClick web page
- Password: the password used when registering on ComfortClick web page (passwords are case sensitive).

NOTE: When importing profiles from web account, all controllers linked to your web account will be imported.

## Controller registration

After first connection, the Controller registration should be done. Unregistered Controller has a fully functional bOS Configurator but inactive user interface. Which means you can create your configuration, but you won't be able to use it with bOS Client applications.

With controller registration you will get FREE license with one user for personal, non-commercial use! More info on [Licensing](#) page.



Picture 5: Controller registration

By clicking on the Register button the web browser is opened and the login page for [www.comfortclick.com](http://www.comfortclick.com) is displayed. User must login to his ComfortClick web page user account.

## Login to your account

Stay signed in

Login

### New User?

[Register](#) if you don't have an account.

### Forgot your password or username?

You can [reset](#) your password or [recover](#) your username.

Picture 6: ComfortClick login page

After successful login Register Controller form is displayed.

# Register Controller

**Machine ID**

C45444ED3FAE

**Username**

ComfortClick

**Server Name\***

**Access ID\***

Register

Cancel

Picture 7: Register controller form

The following fields are filled automatically:

- Machine ID: Unique string based on your controllers hardware.
- Username: Your ComfortClick username.

The following fields should be filled manually:

- Server Name: Name of your bOS Server. Use a name that will enable you to simply separate between your bOS Servers and choose the one that you want to connect to. (e.g. Home, Office, Holiday House, etc.). You can have several servers with the same name.
- Access ID: Unique name for accessing the bOS Server (e.g. Michael.Home, Company.Location, etc.). This name enables adding profile and accessing your bOS Server, without the need of knowing your IP address. The bOS Client and bOS Configurator will always connect to the right IP address either to local if you are on the same network as bOS Server or to public IP address if you are connecting remotely through internet.

To complete the registration click on the Register button.

## Controllers

Controller Name	User Status	Online/Offline	Public Address	Local Address
ComfortClick Office	Valid (2/3 Users)	Online	[Redacted]	[Redacted]
Demo	Valid (3/3 Users)	Online	[Redacted]	[Redacted]
Home	Valid (2/2 Users)	Online	[Redacted]	[Redacted]
Holiday house	Valid (7/10 Users)	Offline	[Redacted]	[Redacted]

Picture 8: User registered controllers list

Selected controller can be edited, removed from account or permanently deleted. Editing controller gives the ability to edit controller access data. Removing the controller is used when the controller is moved or switched. Permanently removing the controller will also remove the licence, so it should only be used when the controller is no longer in use.

## License

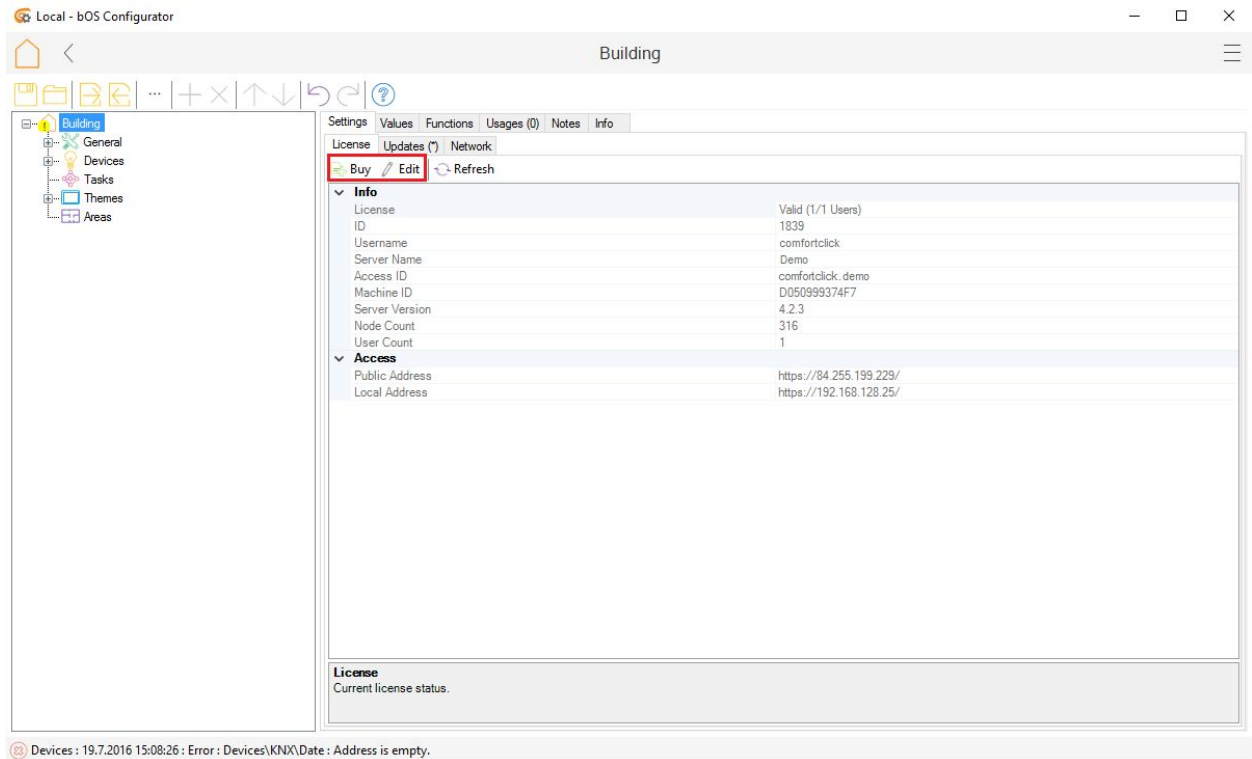
We believe ComfortClick bOS is so good everybody should have it. That's why we give it to you to test it for FREE. [More info about licensing.](#)

In order to obtain bOS FREE License you need to [register](#) your controller.

## License Edit and Buy

After controller registration you can buy bOS PRO license or edit controller information.





Picture 9: License edit and buy

By clicking on the Edit or Buy button the web browser is opened and the login page for [www.comfortclick.com](http://www.comfortclick.com) is displayed. User must login to his ComfortClick web page user account.

## Login to your account



Stay signed in

Login

### New User?

[Register](#) if you don't have an account.

### Forgot your password or username?

You can [reset](#) your password or [recover](#) your username.

Picture 10: ComfortClick login page

After successful login selected form is displayed.

Edit

# Controller Access

---

ID

2716

Username

ComfortClick ComfortClick

**i** Server Name\*

**i** Access ID\*

Controller image

Choose File No file chosen

Upload image to replace existing one.

**i** Local Address

192.168.255.192/24

**i** Public Address

192.168.255.192/24

Using Dynamic IP

Set Public Address

Register

Cancel

Picture 11: Controller edit form

Under Edit section the following fields can be changed:

- Server Name: Name of your bOS Server. Use a name that will enable you to simply separate between your bOS Servers and choose the one that you want to connect to. (e.g. Home, Office, Holiday House, etc.). You can have several servers with the same name.
- Access ID: Unique name for accessing the bOS Server (e.g. Michael.Home, Company.Location, etc.). This name enables adding profile and accessing your bOS Server, without the need of knowing your IP address.
- Controller image: Adding specific picture to the controller for better transparency if the user has multiple controllers.
- Local Address: Local IP address of your bOS Server. Clients connecting from the same local network will use the Local Address instead of Public Address.
- NOTE: Static IP address should be set on computer where bOS Server is installed.
- Public Address: Public Address is a public internet address of the controller (e.g. Static IP: 'https://123.123.123.123', Custom Domain: 'https://controller.mydomain.com', Custom Port: 'https://123.123.123.123:4445'). First time, you need to manually set the Public Address by clicking "Set Public Address" button. If you don't have a static public IP, option Dynamic IP should be checked and Public IP will be refreshed automatically when your public IP is changed.
- NOTE: In order to set the Public IP Address, appropriate ports must be open on your router (e.g. port 443 for https).

## Buy

Under Buy section bOS PRO license and additional users can be purchased.

# bOS PRO Comfort License

## Current License

1083 - CC-Teren - FREE (1/1 Users)

## PRO License

Removes FREE license notification screen. Enables multiple users. **Includes 1 user account.**

## Additional Users

## Total Users

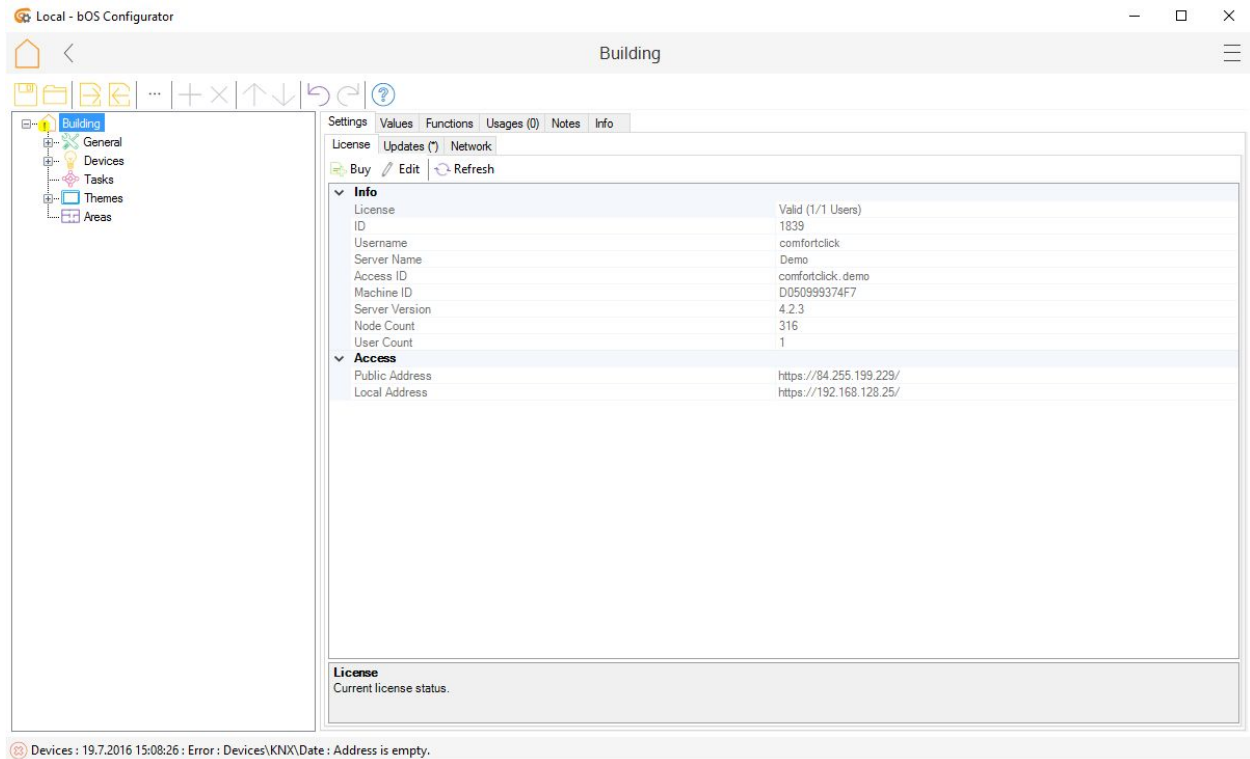
Buy

Cancel

Picture 12: License buy form

## General Overview

After connection to bOS server a configuration editing form is displayed.



Picture 13: Configuration form

## Main toolbar



Picture 14: Main toolbar

The main toolbar enables the following features:

- **Backup:** Creates a complete server configuration backup including images, sounds, object files and data logs.
- **Restore:** Restores a configuration backup.
- **Export configuration:** Exports bOS configuration to selected location.
- **Import configuration:** Imports bOS configuration from location.
- **Node values:** Displays all values of nodes in the project.
- **Add:** Adds a new node to the configuration.
- **Delete:** Deletes a selected node from the configuration.
- **Move up:** Changes the position of the node upwards (enabled only for unsorted nodes).
- **Move down:** Changes the position of the node downwards (enabled only for unsorted nodes).
- **Undo:** Erases the last change done to the configuration reverting it to an older state.
- **Redo:** Reverses last undo function.
- **Help:** Opens node help.

## Main Menu

To open the Main menu, click on  button in the top right corner.

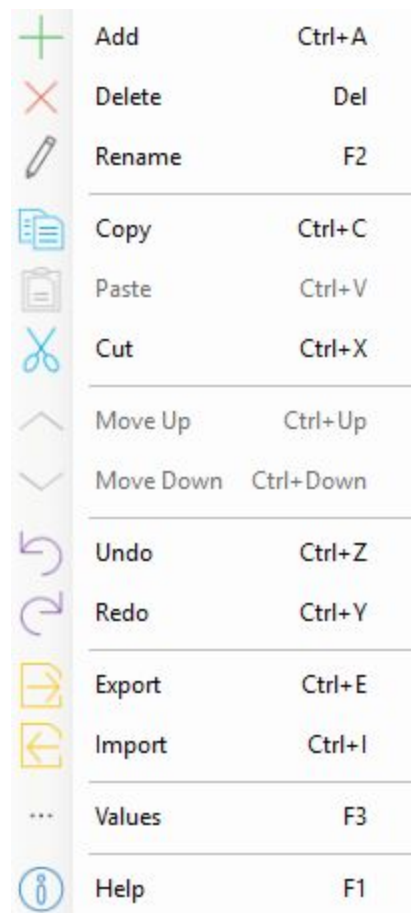


Picture 15: Main menu

- New: Creates a new blank configuration.
- Reload: Restart server and reload the configuration.
- Help: Opens help file.
- About: Opens about page.
- Logout: Logouts from current profile.

## Context Menu

With a right mouse click on desired node a Context menu is opened.



Picture 16: Context menu



The following features can be selected:

- Add: Adds a new node to the configuration.
- Delete: Deletes a selected node from the configuration.
- Copy: Copies a selected node to the clipboard.
- Paste: Pastes the node from the clipboard to the selected node.
- Cut: Copies and removes a selected node.
- Undo: Erases the last change done to the configuration reverting it to an older state.
- Redo: Reverses last undo function.
- Move up: Changes the position of the node upwards (enabled only for unsorted nodes).
- Move down: Changes the position of the node downwards (enabled only for unsorted nodes).
- Values: Opens form for editing values of selected node and subnodes where the following value definitions can be set:
  - Template
  - Default icon
  - Units,
  - Min/Max values
  - Decimal places...

NOTE: Value templates must be set for every value in order to use them in scenes, schedules, themes...



Picture 17: Values editing form

NOTE: To edit multiple values select desired values, right click on the selected values and edit the desired definition.

Values

Path	Name	Type	Template	Image	Unit	Value
Devices\KNX\Irrigation\Zone 4\Time	Value	Integer	Setpoint		min [0,60] *	2
Devices\KNX\Shades\Blinds\Bedroom\Tilt	Value	Integer	Shades		% [0,100]	0
Devices\KNX\Shades\Blinds\Bedroom\Main	Value	Integer	Shades		% [0,100]	0
Devices\KNX\Irrigation\Zone 6\Time	Value	Integer	Setpoint		min [0,60] *	2
Devices\KNX\Lighting\Dimming\Bedroom ceiling	Value	Integer	Dimmer		% [0,100]	0
Devices\KNX\Heating\Bedroom\Valve position	Value	Integer	Valve Label		%	0
Devices\KNX\Irrigation\Zone 5\Time	Value	Integer	Setpoint		min [0,60] *	2
Devices\KNX\Shades\Shutters\Bedroom	Value	Integer	Shades		% [0,100]	0
Devices\KNX\AC\Bedroom\Fan	Value	Integer	Mode			3
Devices\KNX\Lighting\Dimming\Kitchen table	Value	Integer	Dimmer		% [0,100]	0
Devices\KNX\Lighting\Dimming\Living room ceiling	Value	Integer	Dimmer		% [0,100]	0
Devices\KNX\Lighting\Dimming\Living room standing	Value	Integer	Dimmer		% [0,100]	0
Devices\KNX\Lighting\RGB\Blue	Value	Integer	Dimmer		% [0,100]	0
Devices\KNX\Lighting\RGB\Green	Value	Integer	Dimmer		% [0,100]	0
Devices\KNX\Pool\Lighting\Green	Value	Integer				20
Devices\KNX\Lighting\RGB\White	Value	Integer	Dimmer		% [0,100]	100
Devices\KNX\Irrigation\Zone 1\Time	Value	Integer	Setpoint		min [0,60] *	2
Devices\KNX\Pool\Pumps\Sampling pump\Load	Value	Integer				0
Devices\KNX\AC\Living room\Fan	Value	Integer	Mode			3
Devices\KNX\Pool\Pumps\Main pump\Load	Value	Integer				0
Devices\KNX\Lighting\RGB\Red	Value	Integer	Dimmer		% [0,100]	0

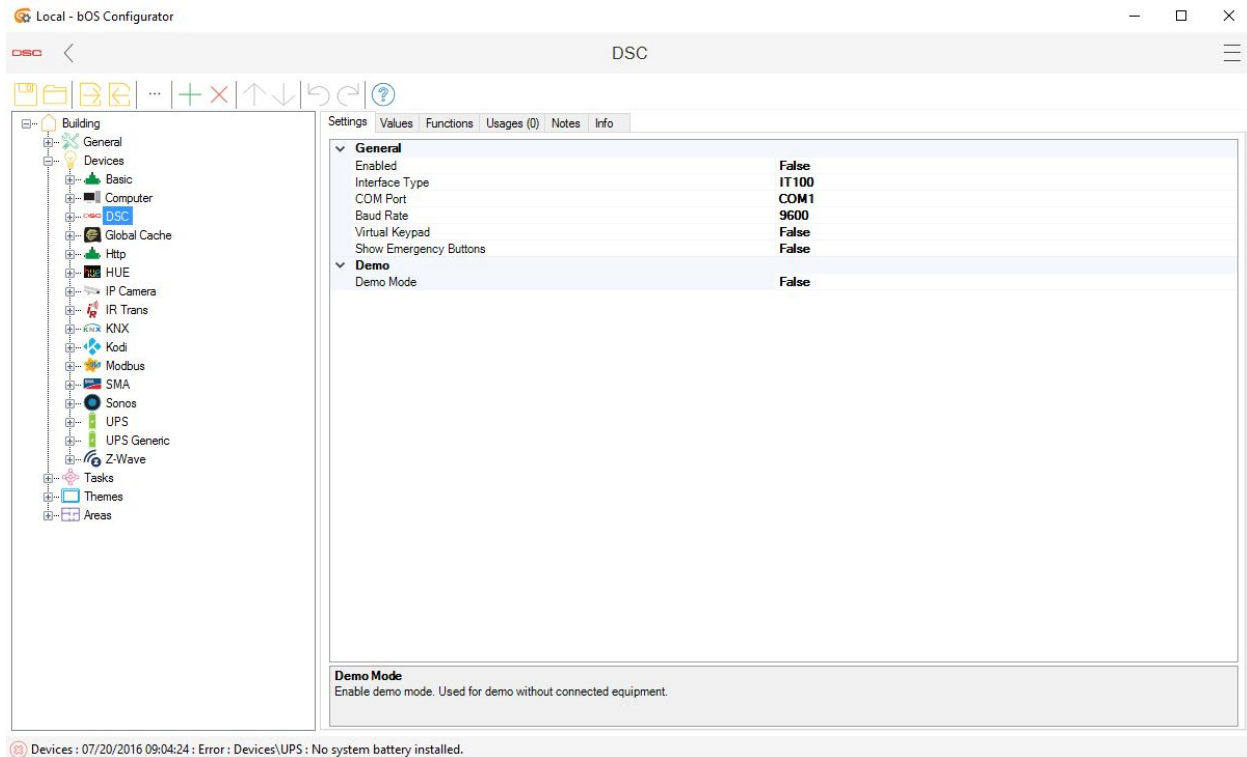
Close

Picture 18: Multi values editing

- Export: Export selected node and subnodes to a file.
- Import: Import individual node and subnodes from a file.

## Node panel

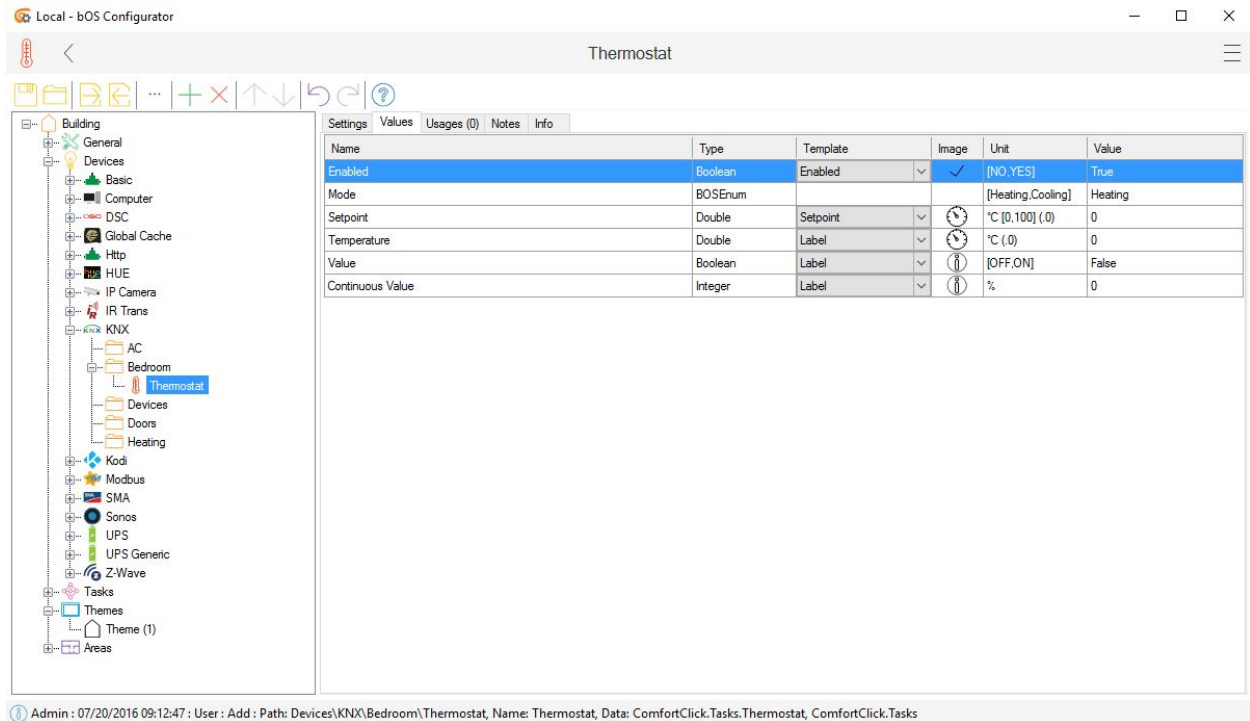
bOS configuration is stored in the form of a configuration tree. Tree contains tree nodes, which represent different configuration objects. The main node of every configuration is the Building node.



Picture 19: Node panel

Node panel is displayed when node in the configuration tree is selected. The node panel displays the following information:

- Settings: List of object's settings. After a change of the setting values, the configuration is uploaded automatically. Detailed descriptions of object settings are displayed by clicking on the node Help button on the node toolbar.
- Values: Current values of the object on the server. Change of the value changes the value of the object on the server. You can test your configuration by changing the values (e.g. turning on/off a light). Each value has a value definition:
  - Template
  - Default icon
  - Unit
  - Min/Max values
  - Decimal places...

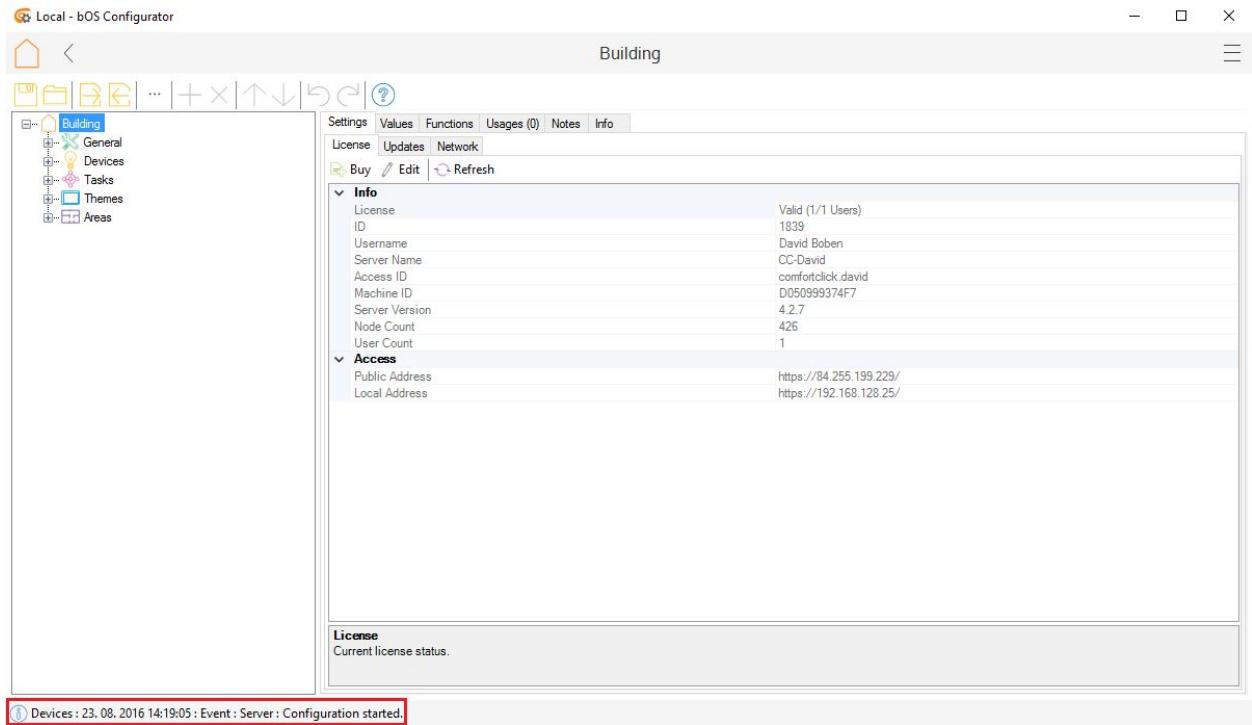


Picture 20: Values

- Functions: Object's functions. Functions of the object on the server can be called from the configurator by clicking on the ... button.
- Usages: Usages of the node in other nodes.
- Notes: Custom node notes.
- Info: General node information.

## Log

The log window displays multiple server logs. Log button can be found on the bottom left corner. Log contains information about device connection state, server messages, user changes, server monitor and debug tool for troubleshooting.



Picture 21: Log button

Log can be filtered, saved or cleared via buttons in the toolbar.

- Devices: Device log contains events for every device (Connected/Disconnected, errors, etc.)



Picture 22: Devices tab

- Admin: Admin logs changes in configuration. Every change is time labeled.

Time	User	Type	Message
07/19/2016 10:16:45	User	Delete	Path: Devices\KNX\Thermostat
07/19/2016 10:16:37	User	Add	Path: Devices\KNX\Operating Time, Name: Operating Time, Data: ComfortClick.Task...
07/19/2016 10:15:36	User	Add	Path: Devices\KNX\Thermostat, Name: Thermostat, Data: ComfortClick.Tasks.Them...
07/19/2016 10:14:43	User	Add	Path: Devices\KNX, Name: KNX, Data: ComfortClick.EIB.KNX, ComfortClick.EIB
07/19/2016 10:14:33	User	Login	IP: 127.0.0.1.
07/19/2016 09:58:30	User	Login	IP: 127.0.0.1.
07/19/2016 09:58:29	User	Info	New configuration.
07/19/2016 09:39:35	User	Login	IP: 127.0.0.1.
07/19/2016 09:36:32	User	Login	IP: 127.0.0.1.
07/19/2016 09:36:31	User	Info	New configuration.
07/19/2016 09:36:25	User	Info	Creating backup.
07/19/2016 09:25:19	User	Undo	Move (Path: Themes\Hiša Djipan\Nastavitve, Index: 3).
07/19/2016 09:25:03	User	Move	Path: Themes\Hiša Djipan\Nastavitve, Index: 3
07/19/2016 09:25:03	User	Move	Path: Themes\Hiša Djipan\Nastavitve, Index: 4
07/19/2016 09:25:01	User	Move	Path: Themes\Hiša Djipan\Nastavitve, Index: 5
07/19/2016 09:25:00	User	Move	Path: Themes\Hiša Djipan\Nastavitve, Index: 4
07/19/2016 09:24:59	User	Move	Path: Themes\Hiša Djipan\Nastavitve, Index: 3

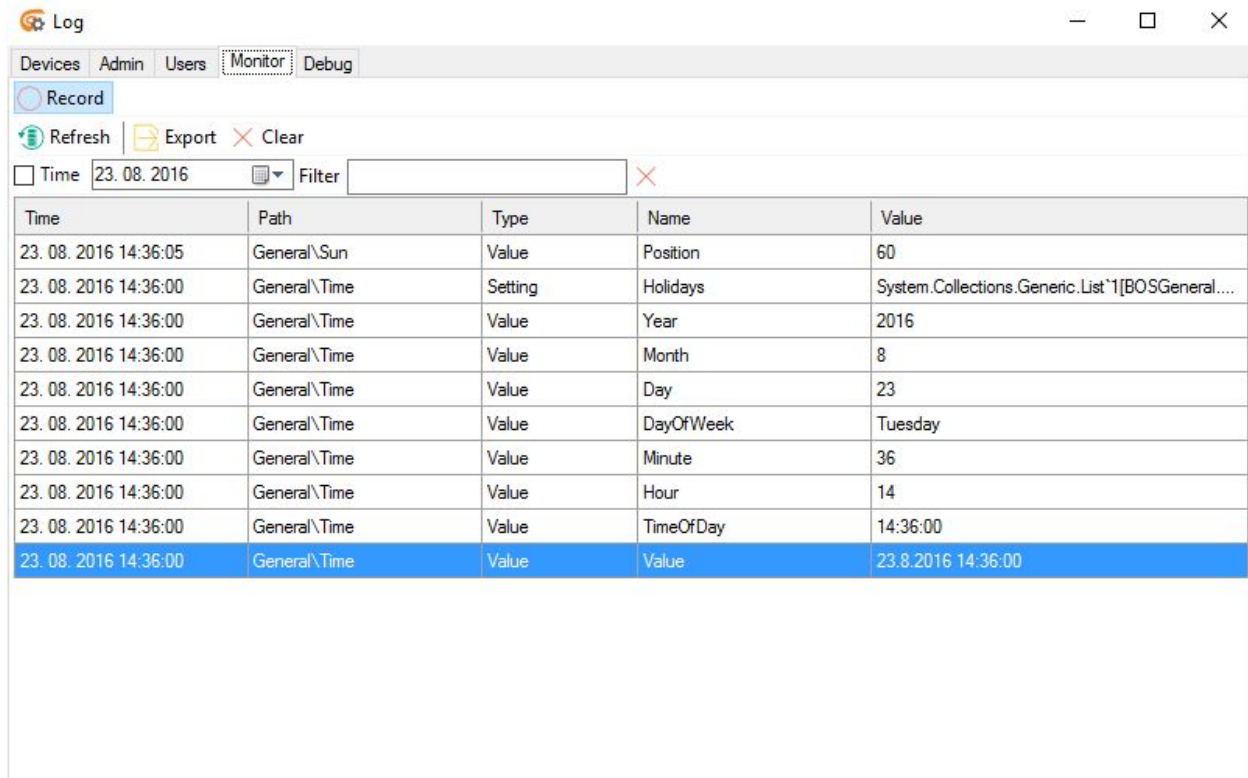
Picture 23: Admin tab

- Users: Users Log displays users activity (login, logout, operations...).

Time	User	Type	Message
07/19/2016 10:01:36	User	Logout	Device: Demo
07/19/2016 09:37:34	User	Logout	Device: Demo
07/14/2016 10:52:33	User	Logout	Device: Demo
07/14/2016 10:52:30	User	Login	IP: 127.0.0.1, Device: Demo, OS: Windows
07/14/2016 10:52:23	User	Login	IP: 127.0.0.1, Device: Demo, OS: Windows
07/14/2016 10:52:06	User	Logout	Device: Demo
07/14/2016 10:51:59	User	Login	IP: 127.0.0.1, Device: Demo, OS: Windows
07/12/2016 07:30:04	User	Logout	Device: Demo
07/12/2016 07:30:01	User	Login	IP: 127.0.0.1, Device: Demo, OS: Windows
07/11/2016 15:32:22	User	SessionExpired	Device: Demo, IP: 127.0.0.1.
07/08/2016 15:28:03	User	SessionExpired	Device: , IP: 127.0.0.1.
07/08/2016 14:30:40	User	Login	IP: 127.0.0.1, Device: Demo, OS: Windows
07/05/2016 15:28:04	User	Logout	Device: Demo
07/05/2016 15:28:04	User	SetValue	Object: Tasks\Scene KNX trigger\Toggle, Name: Value, Value: True
07/05/2016 10:44:10	User	SetValue	Object: Tasks\Scene KNX trigger\Toggle, Name: Value, Value: True
07/05/2016 10:44:10	User	SetValue	Object: Tasks\Scene KNX trigger\Toggle, Name: Value, Value: False
07/05/2016 10:44:10	User	SetValue	Object: Tasks\Scene KNX trigger\Toggle, Name: Value, Value: True

Picture 24: Users tab

- Monitor: The monitor tab displays incoming and outgoing traffic on bOS Server. Traffic can be filtered, saved or cleared via buttons in the toolbar.



Picture 25: Monitor tab

- Debug: Debug tab displays raw incoming and outgoing traffic and communication between devices and bOS Server. Traffic can be filtered, saved or cleared via buttons in the toolbar.